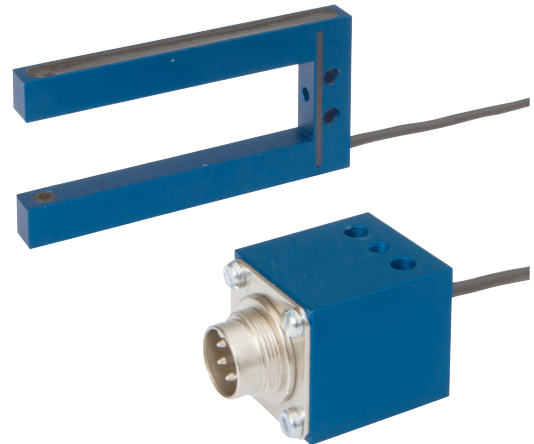


OGS10298

OPTICAL SENSORS • FORK LIGHT BARRIERS

Special design of through-beam sensor. Transmitter and receiver are located in the fork or angular limbs and are perfectly aligned to each other.



MECHANICAL DATA

| | |
|---------------------------------------------|------------------|
| Ambient temperature | -20 °C ... 80 °C |
| Aperture diameter | 0.8 mm |
| Cable length | 0.5 m |
| Degree of protection (IP) | IP67 |
| Fork depth | 65 mm |
| Fork light barrier design | Furcate |
| Fork width | 20 mm |
| Housing design | Cuboid |
| Housing material | Aluminium |
| Material of cable sheath | Other |
| Material of optical surface | Glass |
| Punching tools | Yes |
| Reflector included in the scope of delivery | No |
| Sensor height | 39 mm |
| Sensor length | 74.5 mm |
| Sensor width | 8 mm |

ELECTRICAL DATA

| | |
|---------------------------------|--------------------|
| Analogue output 0 mA ... 20 mA | No |
| Analogue output 0 V ... 10 V | No |
| Analogue output -10 V ... +10 V | No |
| Analogue output 4 mA ... 20 mA | No |
| Connection to amplifier | Yes |
| Equipment protection class | Protection class 3 |
| Max. switching distance | 20 mm |
| Number of pins | 5 |
| Pre-failure message | No |
| Rated switching distance | 20 mm |
| Relative repeat accuracy | 0.01 mm |
| Repeatability +/- | 10 µm |
| Setting procedure | Parameterization |

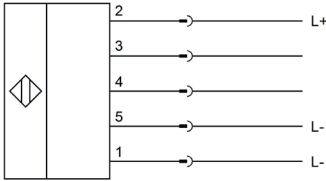
ELECTRICAL DATA

| | |
|------------------------------------------------|--------------------|
| Suitable for safety functions | No |
| Type of electrical connection | Plug-in connection |
| Type of the forked light barrier | High resolution |
| With communication interface, analog | No |
| With communication interface, AS-Interface | No |
| With communication interface, CANOpen | No |
| With communication interface, DeviceNet | No |
| With communication interface, Ethernet | No |
| With communication interface, INTERBUS | No |
| With communication interface, PROFIBUS | No |
| With communication interface, RS-232 | No |
| With communication interface, RS-422 | No |
| With communication interface, RS-485 | No |
| With communication interface, SSD | No |
| With communication interface, SSI | No |
| With monitoring function of downstream devices | No |
| With other analog output | No |
| With restart lock | No |
| With time function | No |

OPTICAL DATA

| | |
|--------------------------|---------------------|
| Laser protection class | None |
| Light beam form | Point |
| Light source | Infrared light |
| Light spot | 0.5 mm ² |
| Min. object size | 0.2 mm |
| Wavelength of the sensor | 905 nm |

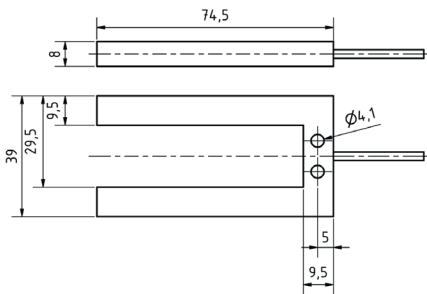
CONNECTION



Colors: 1 = BU (blue), 2 = BN (brown), 3 = WH (white), 4 = BK (black), 5 = RD (red)

Functions: 1 = L-, 2 = L+, 3 = PNP NC NPN NO, 4 = PNP NO NPN NC, 5 = connection monitoring

DIMENSIONAL DRAWING



INSTALLATION



Mounting / Installation may only be carried out by a qualified electrician!

DISPOSAL



SAFETY WARNINGS

Before initial operation, please make sure to follow all safety instructions that may be provided in the product information!