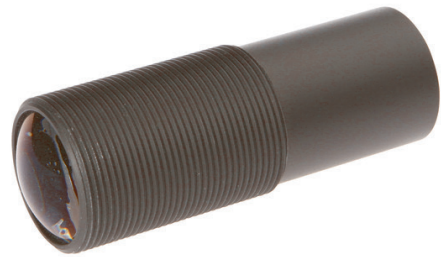


AL000067

ACCESSORIES • ATTACHMENT OPTICS



MECHANICAL DATA

| | |
|-----------------------------|-----------------|
| Design | External thread |
| Diameter | 34 mm |
| Housing coating | Anodised |
| Housing material | Aluminium |
| Length | 90 mm |
| Material of optical surface | Glass |
| Thread pitch | 1.5 mm |
| Thread size, metric | 34 |
| Type of accessories | Lens |

ELECTRICAL DATA

| | |
|--------------------------|--------|
| Switching distance (MAX) | 400 mm |
| Switching distance (MIN) | 50 mm |

OTHER DATA

| | |
|---|-----|
| Suitable for diffuse reflection sensors | Yes |
|---|-----|

DIMENSIONAL DRAWING

INSTALLATION



Mounting / Installation may only be carried out by a qualified electrician!

DISPOSAL



SAFETY WARNINGS

Before initial operation, please make sure to follow all safety instructions that may be provided in the product information!

Never use these devices in applications where the safety of a person depends on their functionality.