

AE000017
ACCESSORIES • MOUNTING



MECHANICAL FEATURES

Angle	90 °
Diameter/width of the fastening holes for sensor	6.5 mm
Height	40.89 mm
Length	29.73 mm
Material	Stainless steel
Mounting type	Screwing
Number of boreholes	2
Number of oblong holes	4
Thread pitch	0.7 mm
Thread size, metric	4
Version	Mounting bracket
Width	33.78 mm

OTHER FEATURES

Scope of delivery	Mounting material for lights, brackets
-------------------	--

Other

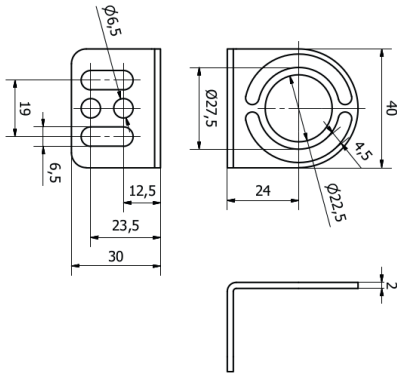
Packaging dimensions	70mm x 0.0mm x 100mm
Shipping weight	0.04kg
Tariff code	85389099

Classification

ipf product group	900
eClass 8.0	27279202
eClass 9.0	27273701
eClass 9.1	27273701
ETIM-5.0	EC002625
ETIM-6.0	EC002625
ETIM-7.0	EC002625

Connection

Dimensional drawing



Installation



Mounting / installation may only be carried out by a qualified electrician!

Disposal



Software

Please download the software or driver required for operating your new device on our homepage: www.ipf.de

Safety warnings

Before initial operation, please make sure to follow all safety instructions that may be provided in the product information. Never use these devices in applications where the safety of a person depends on their functionality. LED lighting systems can generate intensive UV radiation, which can damage your eyes in case of improper use. The manufacturer cannot be held responsible for damages that result from improper use or connection.