

AY000101
ACCESSORIES • MOUNTING



MECHANICAL FEATURES

Diameter/width of the fastening holes for sensor	6 mm
Height	58 mm
Length	28 mm
Material	Stainless steel
Mounting type	Screwing
Number of oblong holes	3
Version	Mounting bracket
Weight	66 kg
Width	58 mm

OTHER FEATURES

Scope of delivery	Toothed washer for sensor, bracket
-------------------	------------------------------------

Other

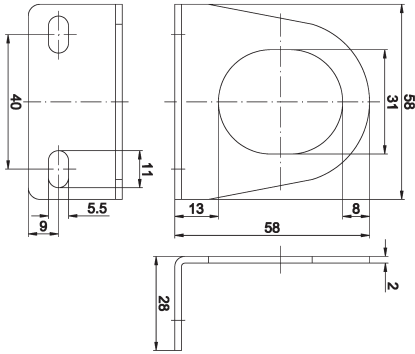
Packaging dimensions	100mm x 30mm x 175.0mm
Shipping weight	0.07kg
Tariff code	73269098

Classification

ipf product group	900
eClass 8.0	27279202
eClass 9.0	27273701
eClass 9.1	27273701
ETIM-5.0	EC002625
ETIM-6.0	EC002625
ETIM-7.0	EC002625

Connection

Dimensional drawing



Installation



Mounting / installation may only be carried out by a qualified electrician!

Disposal



Software

Please download the software or driver required for operating your new device on our homepage: www.ipf.de

Safety warnings

Before initial operation, please make sure to follow all safety instructions that may be provided in the product information. Never use these devices in applications where the safety of a person depends on their functionality. LED lighting systems can generate intensive UV radiation, which can damage your eyes in case of improper use. The manufacturer cannot be held responsible for damages that result from improper use or connection.