

sensor inductive, all steel

PRODUCT: cuboid device, stainless steel
flush

DESIGN: 22 x 40 x 46

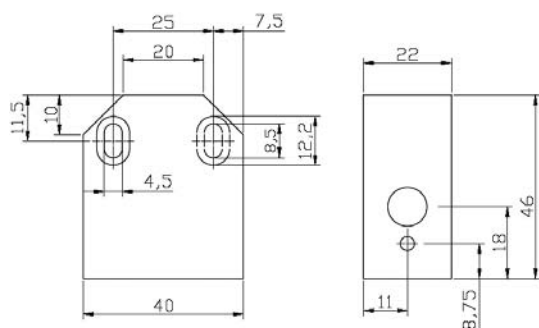


- robust stainless steel housing
- status display by LED
- short circuit and reverse polarity protection
- temperatur-resistant up to 100°C
- connection with LEMOSA connector

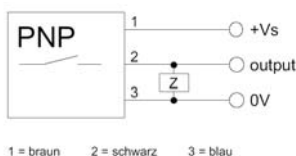
Technical Data

Technical Data	DC
operating voltage	10 - 30V DC
current consumption	< 10mA
short circuit and reverse polarity protection	yes
output	npn, no
max current load	200mA
voltage drop	< 2V
nominal sensing range Sn	2mm
real sensing range Sr	Sn ± 20%
hysteresis	3% to 20% of Sn
switching frequency	25Hz
status display	LED yellow
housing material	VA 1.4305
system of protection	IP67 ; EN60529
ambient temperature	- 20 to + 100°C

Fig. 1



electrical connection



Product: cuboid device, all steel, design 22

article-no.	design	remarks	length	housing	voltage	output	current	sn	connection	Fig.
IC2201L0	22x40x46	100°C	46	1.4305	10-30VDC	npn,no	200mA	2	Lemo-Stecker	1

Warning: Never use these devices in applications where the safety of a person depends on their functionality!