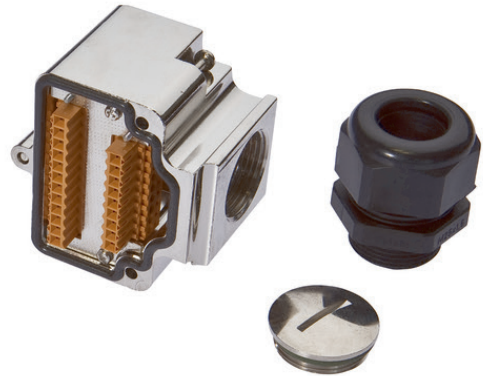


VK000028

CONNECTION TECHNOLOGY • DISTRIBUTION TERMINALS

The wiring of sensors and actors is considerably more comfortable with our sensor distribution box. The individual devices are connected with the distributor via an M8 or M12 cable that is pre-assembled on both sides. By means of the trunk line the effort for laying and wiring the cables can be reduced significantly. The operating mode display provides information about the sensors operating mode (operating voltage, switching state). Thus, troubleshooting is simpler, as an overview about the functioning of the connected periphery is directly given.



MECHANICAL DATA

Positioning of cable feed, field side	Straight
---------------------------------------	----------

ELECTRICAL DATA

Number of pins	21
Suitable for self-assembly	Yes
Type of plug-in contact, field side	Female (socket)

DIMENSIONAL DRAWING

INSTALLATION



Mounting / Installation may only be carried out by a qualified electrician!

DISPOSAL



SAFETY WARNINGS

Before initial operation, please make sure to follow all safety instructions that may be provided in the product information!

Never use these devices in applications where the safety of a person depends on their functionality.