

**VK000008**

**CONNECTION TECHNOLOGY • DISTRIBUTION TERMINALS**

The wiring of sensors and actors is considerably more comfortable with our sensor distribution box. The individual devices are connected with the distributor via an M8 or M12 cable that is pre-assembled on both sides. By means of the trunk line the effort for laying and wiring the cables can be reduced significantly. The operating mode display provides information about the sensors operating mode (operating voltage, switching state). Thus, troubleshooting is simpler, as an overview about the functioning of the connected periphery is directly given.



**MECHANICAL DATA**

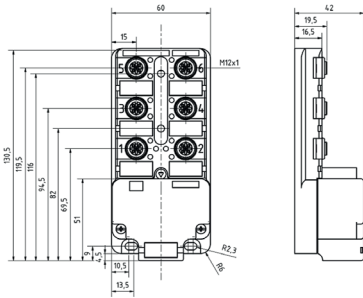
Degree of protection (IP)	IP67
Fix cable version suitable for trailing chain	No
Height	60 mm
Housing material	PBT
Length	41.5 mm
Width	127 mm

**ELECTRICAL DATA**

Cable length, configurable	Yes
Connection for NPN sensors	No
Number of sensor/actuator slots	6
Operating voltage (MAX)	30 V
Operating voltage (MIN)	10 V
Type of branch for trunk line	Hood distributor / pluggable trunk line connection
Type of branches for sensor/actuator cables	M12
Type of cable gland	M20 x 1.5
Voltage type	DC
With potential separation	No

**OTHER DATA**

Degree of soiling	3
Operating temperature (MAX)	90 °C
Operating temperature (MIN)	-20 °C

**DIMENSIONAL DRAWING****INSTALLATION**

Mounting / Installation may only be carried out by a qualified electrician!

**DISPOSAL****SAFETY WARNINGS**

Before initial operation, please make sure to follow all safety instructions that may be provided in the product information!

Never use these devices in applications where the safety of a person depends on their functionality.