

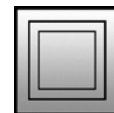
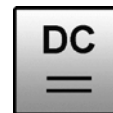
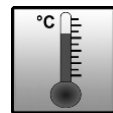
INKAE178

Inductive sensors
High-temperature sensors

- / roust plastic housing
- / short-circuit and reverse polarity protected
- / sensitivity adjustable
- / LED switching status



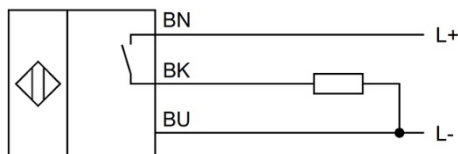
switching distance up to 120mm
ambient temperature up to 120°C



TECHNICAL DATA

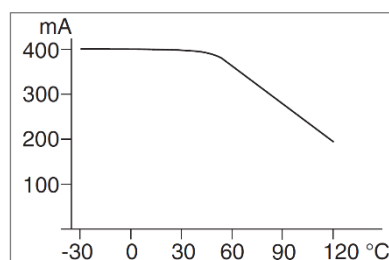
nominal switching distance	80mm
adjustment range	45 ... 120mm
operating voltage	10 ... 55V DC
current consumption (w/o load)	4mA
output circuit	pnp, NO
output current (max. load)	400mA
switching frequency	20Hz
display (switching status)	LED yellow
temperature (operating)	-25 ... +120°C
degree of protection (EN 60529)	IP 67
material (housing)	PBT
connection	2m silicone cable, 3 x 0.34mm ²

Connection

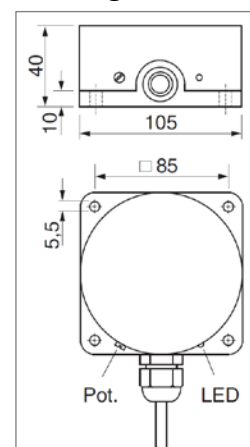


colors: BN = brown, BU = blue, BK = black
functions: BN = L+, BU = L-, BK = PNP NO

Ampacity



Dimensional drawing



Note: The potentiometer for adjusting the switching distance is located behind a plastic screw. Be aware to mount this screw after the adjustment.

SAFETY WARNINGS:

Before initial operation, please make sure to follow all safety instructions that may be provided in the product information!
Never use these articles in applications where the safety of a person depends on their functionality.