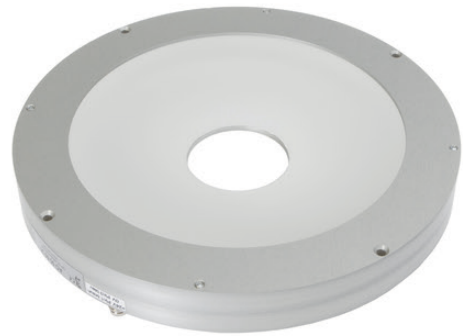


AO000530

LED-LIGHTS • ADDITIONAL LIGHTS FOR CAMERA SYSTEMS

For any kind of inspection tasks with a camera sensor the lighting is essential, as only high-contrast images enable reproducible evaluations. Here the lighting has a decisive influence. The choice depends on different factors such as the distance to the test object, its size, the component criteria to be tested or the expected environmental conditions.



MECHANICAL DATA

Ambient temperature (MAX)	50 °C
Degree of protection (IP)	IP00
Diameter	172 mm
Housing design	Round
Housing material	Aluminium
Length	20 mm
Light head material	Aluminium
Type of lamp stand	Screw-on plate

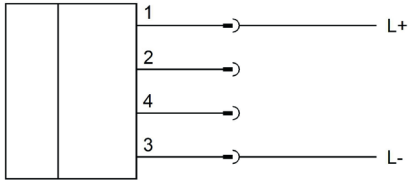
ELECTRICAL DATA

Max. current consumption	520 mA
Nominal supply voltage (MAX)	24 V
Nominal supply voltage (MIN)	24 V
Number of pins	4
Protection class	III
Type of electrical connection	Connector M8
Voltage type	DC

OPTICAL DATA

Actual camera illumination	Yes
Color temperature	6500 K
Lamp	LED
Light source	White light
Light version	Dome light
Number of LEDs	128
Radiation angle	120 °
With lamp	Yes

CONNECTION



Colors: 1 = BN (brown), 2 = WH (white), 3 = BU (blue), 4 = BK (black)

Functions: 1 = L+, 2 = n. c., 3 = L-, 4 = n. c.

DIMENSIONAL DRAWING

INSTALLATION



Mounting / Installation may only be carried out by a qualified electrician!

DISPOSAL



SAFETY WARNINGS

Before initial operation, please make sure to follow all safety instructions that may be provided in the product information!

LED lighting systems can generate very intense radiation, which, if used improperly, can possibly damage the eyes. For damage caused by improper use or connection, the manufacturer cannot be held responsible.

Never use these devices in applications where the safety of a person depends on their functionality.