

## M12-Receptacle Connectors In Accordance With IEC 61076-2-101

PRSFM/0.5 M | PRKFM/0.5 M

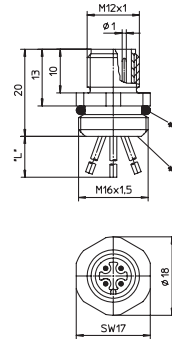


### Male, 4-, 5- and 8-Pole

M12 Receptacle connector, M12 male connector for front mounting, housing of stainless steel, assembled stranded wire, solder contacts potted with epoxy, chassis side thread M16 x 1.5 (panel nut RSKFM 16)

– especially designed for use in food processing equipment –

### PRSFM/0.5 M



\*a O-ring enclosed separately  
 \*b solder contacts potted with epoxy  
 \*L\*0.5 m

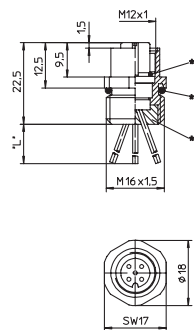


### Female, 4-, 5- and 8-Pole

M12 Receptacle connector, M12 female connector for front mounting, housing of stainless steel, assembled stranded wire, solder contacts potted with epoxy, chassis side thread M16 x 1.5 (panel nut RSKFM 16)

– especially designed for use in food processing equipment –

### PRKFM/0.5 M

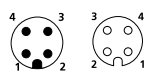


\*a O-Ring  
 \*b O-ring enclosed separately  
 \*c solder contacts potted with epoxy  
 \*L\*0.5 m

### Pin Assignments

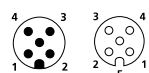
Face Views / M12, Male / Female

#### 4 pole



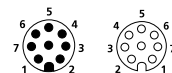
1 = brown  
 2 = white  
 3 = blue  
 4 = black

#### 5 pole



1 = brown  
 2 = white  
 3 = blue  
 4 = black  
 5 = green/yellow

#### 8 pole



1 = white  
 2 = brown  
 3 = green  
 4 = yellow  
 5 = grey  
 6 = pink  
 7 = blue  
 8 = red



Be Certain with Belden

**M12-Receptacle Connectors In Accordance With IEC 61076-2-101**  
 PRSFM/0.5 M | PRKFM/0.5 M

**Technical Data**

**Environmental**





Degree of protection IP 67 / NEMA 6P  
 Operating temperature range -25°C (-13°F) / +70°C (+158°F)

**Mechanical**

Housing / Molded body stainless steel  
 Insert PBT  
 Contact CuZn, pre-nickel and 0.8 microns gold-plated  
 O-ring EPDM

**Electrical**

Contact resistance ≤ 5 mΩ  
 Nominal current at 40°C 4-5 poles 4 A  
 8 poles 2 A  
 Nominal voltage 4 poles 240 V  
 5 poles 60 V  
 8 poles 30 V  
 Rated voltage 4 poles 250 V  
 5 poles 63 V  
 8 poles 36 V  
 Test voltage 4 poles 2.0 kV eff. / 60 s  
 5-8 poles 1.5 kV eff. / 60 s  
 Insulation resistance > 10<sup>9</sup> Ω  
 Pollution degree 3

Part Number		Pins	Lead (mm <sup>2</sup> )	Characteristics
PRSFM 4/0,5 M	PRKFM 4/0,5 M	4	0.34 (22 AWG)	 
PRSFM 5/0,5 M	PRKFM 5/0,5 M	5	1 x 0.5 / 4 x AWG 22	 
PRSFM 8/0,5 M	PRKFM 8/0,5 M	8	0.22 (24 AWG)	