

M12 Field Attachable Connectors (Stainless Steel Hardware)

RSCWN | RKCWN

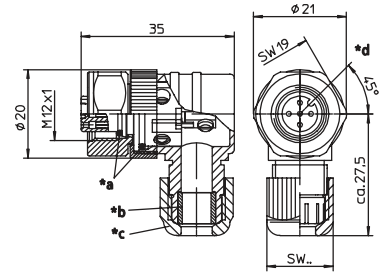


Male, 4- and 5-Pole (90°)

Field attachable connector, M12 male right angle connector, 4- and 5-pole with stainless steel hexagon threaded joint, assembling with screw terminals.

– especially designed for use in food processing equipment –

RSCWN



- *a O-Ring
- *b gasket
- *c cap nut
- *d insert 90° rotatable

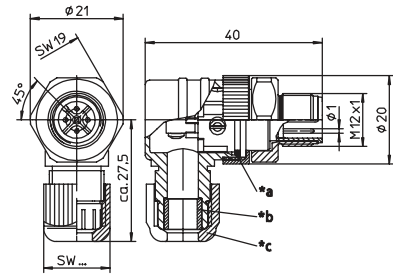


Female, 4- and 5-Pole

Field attachable connector, M12 female right angle connector, 4- and 5-pole with stainless steel hexagon threaded joint, assembling with screw terminals.

– especially designed for use in food processing equipment –

RKCWN

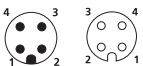


- *a O-Ring
- *b gasket
- *c cap nut

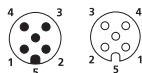
Pin Assignments

Face Views / M12, Male / Female

4 pole



5 pole





Be Certain with Belden

M12 Field Attachable Connectors (Stainless Steel Hardware)

RSCWN | RKCWN

Technical Data

Environmental

Degree of protection IP 67 / NEMA 6P
 Operating temperature range -25°C (-13°F) / +85°C (+185°F)

Mechanical

Housing / Molded body PBT
 Insert PBT
 Contact CuZn, pre-coppered, CuSnZn
 8-poles pre-nickeled, gold-plated
 Receptacle shell stainless steel
 O-ring FKM
 Mode of connection Screw terminals
 Connectable conductor 4-5 poles max. 0.75 mm²
 8 poles max. 0.50 mm²

Electrical

Contact resistance ≤ 5 mΩ
 Nominal current at 40°C 4-5 poles 4 A
 8 poles 2 A
 Nominal voltage 4 poles 240 V
 5 poles 60 V
 8 poles 30 V
 Rated voltage 4 poles 250 V
 5 poles 63 V
 8 poles 36 V
 Test voltage 4 poles 2.0 kV eff. / 60 s
 5 poles 1.5 kV eff. / 60 s
 8 poles 0.9 kV eff. / 60 s
 Insulation resistance > 109 Ω
 Pollution degree 3

Part Number		Pins	Cable Diameter Range	Characteristics
Male	Female			
RSCWN 4/7	RKCWN 4/7	4	Ø 3.0-6.5 mm /SW 15	
RSCWN 4/9	RKCWN 4/9		Ø 4.0-8.0 mm /SW 19	
RSCWN 5/7	RKCWN 5/7	5	Ø 3.0-6.5 mm /SW 15	
RSCWN 5/9	RKCWN 5/9		Ø 4.0-8.0 mm /SW 19	