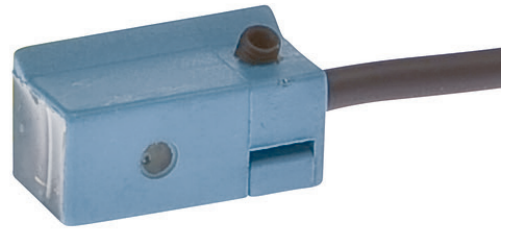


MR15A307**MAGNETIC SENSORS • SENSORS FOR PNEUMATIC CYLINDERS**

MR152107, Diode für Parallelschaltung

**MECHANICAL DATA**

Ambient temperature (MAX)	80 °C
Ambient temperature (MIN)	-25 °C
Cable length	2.5 m
Degree of protection (IP)	IP67
Housing design	Cuboid
Housing material	Plastic
Increased ambient temperatures > 80°C	No
Material of cable sheath	PVC
Metal housing	No
Mounting access, cylinder groove	Lateral
Number of wires	3
Sensor height	10.5 mm
Sensor length	10 mm
Sensor surface position	Center of the device
Sensor width	20 mm
Strong vibration / motion	No
Version	Trapezoidal groove

ELECTRICAL DATA

Cross/short circuit identification possible	Yes
Low sensitivity	No
Low switching hysteresis	No
Max. output current	150 mA
Number of switching outputs	1
Operating voltage (MAX)	30 V
Operating voltage (MIN)	10 V
Reed contact	Yes
Reverse polarity protection	Yes
Setting via teach-in	No
Short-circuit-proof	Yes
Suitable for safety functions	No

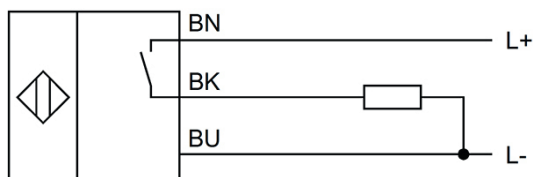
ELECTRICAL DATA

Switching capacity	2 W
Two switching points	No
Type of electrical connection	Cable
Type of switching function	Normally open contact
Type of switching output	Dry reed contact
Voltage type	DC
With LED display	Yes
With monitoring function of downstream devices	No

OTHER DATA

Cylinder sensors	Yes
Harsh environmental conditions	No
Metallic sensor surface	No
Oil and cooling lubricants	No
Short travel path	No

CONNECTION



Colors: BN (brown), BU (blue), BK (black)

Functions: BN = L+, BU = L-, BK = PNP NO

DIMENSIONAL DRAWING

INSTALLATION



Mounting / Installation may only be carried out by a qualified electrician!

DISPOSAL



SAFETY WARNINGS

Before initial operation, please make sure to follow all safety instructions that may be provided in the product information!

Never use these devices in applications where the safety of a person depends on their functionality.