

IN854300

INDUCTIVE SENSORS • NORM SWITCHING DISTANCE

Inductive proximity switches are contact-free sensors. They detect all conductive metals, regardless of whether they move or not. The achievable sensing range of the devices depends on the object material and its dimensions. The vibration-resistant sensors can be approached laterally or frontally. Inductive proximity switches are used for presence detection (e.g. goods carriers), positioning (e.g. dampers), counting (e.g. nuts /bolts), speed detection (e.g. for cog wheels), on conveyor systems (e.g. hose feedings) or distance measurements (e.g. press-in checking) of metallic objects.

MECHANICAL DATA

Active area material of sensor	PBT
Ambient temperature	-25 °C ... 75 °C
Cable length	2 m
Degree of protection (IP)	IP67
Housing design	Cylinder plain
Housing material	Aluminum / PTB
Material of cable sheath	PVC
Mechanical mounting condition for sensor	Non-flush
Number of wires	2
Pressure-proof	No
Sensor diameter	200 mm
Sensor length	60 mm

ELECTRICAL DATA

Cascadable	No
Correction factor (aluminum)	0.4
Correction factor (brass)	0.4
Correction factor (copper)	0.3
Correction factor (St37)	1
Correction factor (stainl. steel)	0.7
IO-Link compatible	No
Max. output current	400 mA
No-load current	2.5 mA
Reverse polarity protection	Yes
Suitable for safety functions	No
Switching distance	140 mm
Switching frequency	10 Hz
Type of electrical connection	Cable
Type of switching function	Anticoincidence
Type of switching output	Two-wire
Voltage drop	6 V

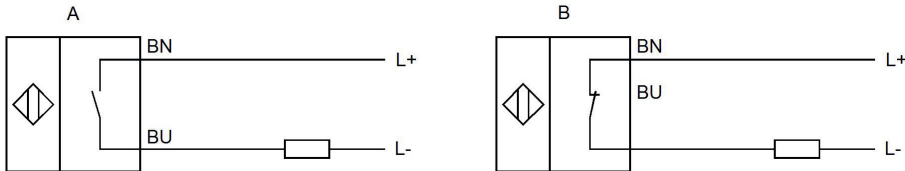
ELECTRICAL DATA

Voltage type	AC
With LED display	Yes
With monitoring function of downstream devices	No

OTHER DATA

Areas inquiry	Yes
---------------	-----

CONNECTION

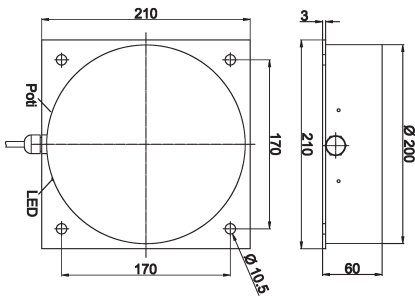


Colors: A: BN (brown), BU (blue)

B: BN (brown), BU (blue) **Functions:** A: BN = L+, BU = L-

B: BN = L+, BU = L-

DIMENSIONAL DRAWING



INSTALLATION



Mounting / Installation may only be carried out by a qualified electrician!

DISPOSAL



SAFETY WARNINGS

Before initial operation, please make sure to follow all safety instructions that may be provided in the product information!