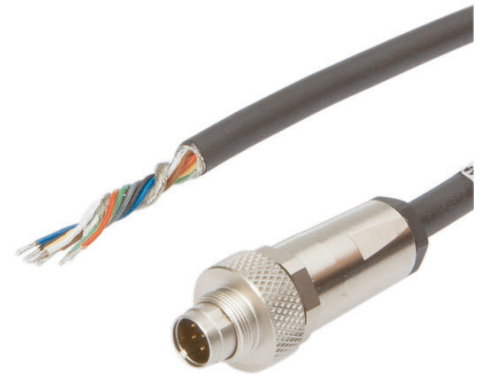


VK507B45

CONNECTION TECHNOLOGY • CABLE SOCKETS /CONNECTORS ONE-SIDED PRE-ASSEMBLED

ipf cable sockets are used primarily for establishing the electrical connection of sensors. Their features are characterized by rugged design, the highest protection classes (IP67 | IP68 | IP69K) and, if desired, with 360° shielding. With the features: bus-ready, suitable for use with drag chains and robots, resistance to oil and chemicals, resistance to welding sparks, their resistance to cleaning agents or high-pressure and steam-jet cleaning, the expanded temperature range of up to +230°C, the rapid interconnection technology and special data transmission properties, the cable sockets meet all requirements in automation technology.



MECHANICAL DATA

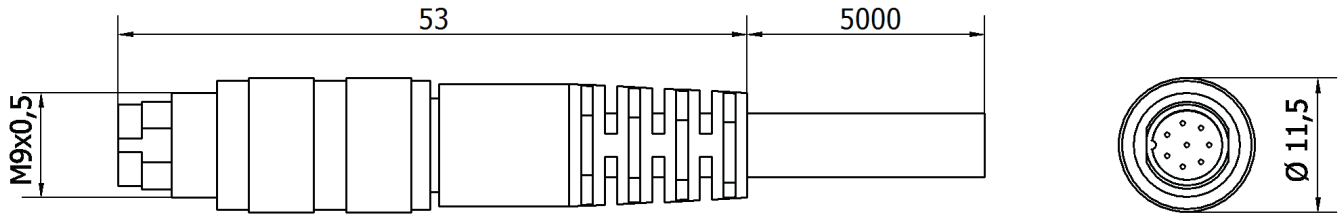
Ambient temperature (MAX)	70 °C
Ambient temperature (MIN)	-25 °C
Cable length	5 m
Degree of protection (IP)	IP67
Material of cable sheath	PUR (Polyurethane)
Number of wires	8
Positioning of cable feed, field side	Straight
Positioning of cable feed, housing side	Straight
Wire cross section	0.14 mm ²

ELECTRICAL DATA

Flow resistance	3 mOhm
Number of pins	8
Rated current I _n	1 A
Rated voltage	125 V
Shielded	Yes
Type of electrical connection, field side	M9
Type of electrical connection, housing side	M9
Type of plug-in contact, housing side	Male (plug)
With LED display	No

OTHER DATA

Flame resistant	No
IR-networked	No
Oil and cooling lubricants	Yes
Welding area	Yes

DIMENSIONAL DRAWING**INSTALLATION**

Mounting / Installation may only be carried out by a qualified electrician!

DISPOSAL**SAFETY WARNINGS**

Before initial operation, please make sure to follow all safety instructions that may be provided in the product information!

Never use these devices in applications where the safety of a person depends on their functionality.