

## AO000198

### LED-LIGHTS • ADDITIONAL LIGHTS FOR CAMERA SYSTEMS

For any kind of inspection tasks with a camera sensor the lighting is essential, as only high-contrast images enable reproducible evaluations. Here the lighting has a decisive influence. The choice depends on different factors such as the distance to the test object, its size, the component criteria to be tested or the expected environmental conditions.



#### MECHANICAL DATA

Ambient temperature	-10 °C ... 55 °C
Degree of protection (IP)	IP50
Front screen material	Plastic
Height	75 mm
Housing design	Rod
Housing material	Aluminium
Width	7 mm

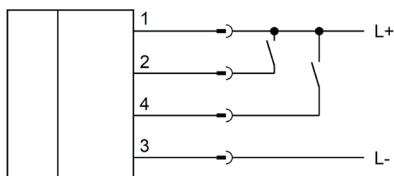
#### ELECTRICAL DATA

Nominal supply voltage	10 V ... 30 V
Type of electrical connection	M5-connector
Voltage type	DC

#### OPTICAL DATA

Actual camera illumination	Yes
Light source	Blue light
Light version	Transmitted light lamp

#### CONNECTION



**Colors:** 1 = BN (brown), 2 = WH (white), 3 = BU (blue), 4 = BK (black)

**Functions:**

#### DIMENSIONAL DRAWING

#### INSTALLATION

#### DISPOSAL



Mounting / Installation may only be carried out by a qualified electrician!



## SAFETY WARNINGS

Before initial operation, please make sure to follow all safety instructions that may be provided in the product information!