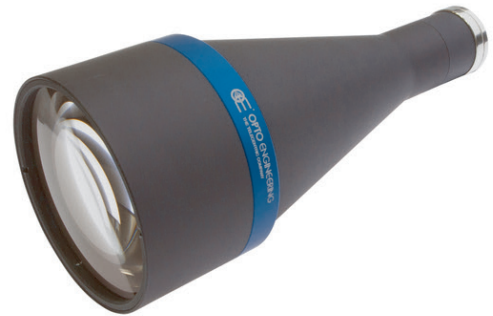


AO000488

ACCESSORIES • LENSES

A lens is a gathering, optical system that generates a real optical image of an object. The correct choice of a suitable lens, which is ideal for the respective application in combination with the camera sensor, plays an important role. The figure of the image circle or image field is projected through the lens to the image sensor that converts it into electrical signals.



MECHANICAL DATA

Housing material	Aluminium
Image circle diameter	11 mm
Lens diameter	100
Lens length	245.5 mm
Material of optical surface	Glass
With C-mount thread	Yes

ELECTRICAL DATA

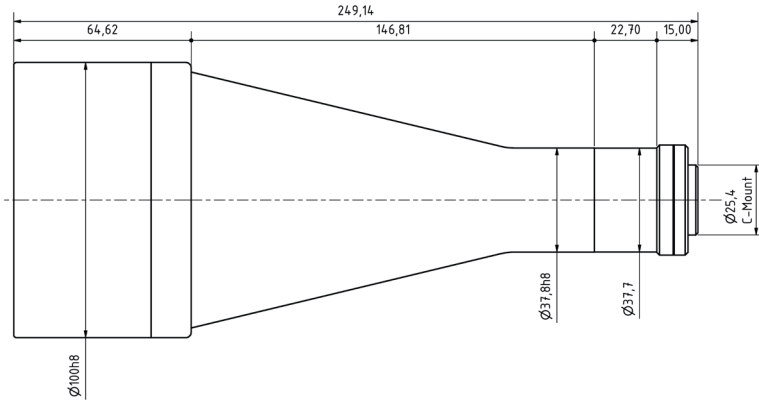
Aperture control	Manual
Lens connection	C-mount (1-32 UN 2A)

OPTICAL DATA

Aperture number	8
Depth of focus	35 mm
Focusable	No
Lens type	Bi-telecentric
Magnification	0.138
Motor zoom	No
Operating distance	181.8 mm
Resolution capacity	Up to 2 megapixel
Telecentricity	0.08 °

OTHER DATA

Distortion	0.07 %
------------	--------

DIMENSIONAL DRAWING**INSTALLATION**

Mounting / Installation may only be carried out by a qualified electrician!

DISPOSAL**SAFETY WARNINGS**

Before initial operation, please make sure to follow all safety instructions that may be provided in the product information!

Never use these devices in applications where the safety of a person depends on their functionality.