

AO000190

LED-LIGHTS • ADDITIONAL LIGHTS FOR CAMERA SYSTEMS

For any kind of inspection tasks with a camera sensor the lighting is essential, as only high-contrast images enable reproducible evaluations. Here the lighting has a decisive influence. The choice depends on different factors such as the distance to the test object, its size, the component criteria to be tested or the expected environmental conditions.



MECHANICAL DATA

Ambient temperature	-10 °C ... 40 °C
Degree of protection (IP)	IP50
Front screen material	Plastic
Height	100 mm
Housing design	Rod
Housing material	Aluminium
Width	7 mm

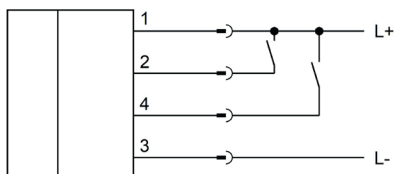
ELECTRICAL DATA

Lamp power	2.9 W
Nominal supply voltage	10 V ... 30 V
Number of pins	4
Type of electrical connection	M5-connector
Voltage type	DC

OPTICAL DATA

Actual camera illumination	Yes
Light source	Polarity free red light
Light version	Line lights

CONNECTION



Colors: 1 = BN (brown), 2 = WH (white), 3 = BU (blue), 4 = BK (black)

Functions:

DIMENSIONAL DRAWING

INSTALLATION



Mounting / Installation may only be carried out by a qualified electrician!

DISPOSAL



SAFETY WARNINGS

Before initial operation, please make sure to follow all safety instructions that may be provided in the product information!