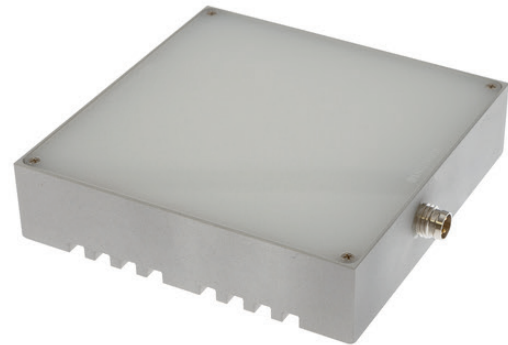


ED870171

LED-LIGHTS • ADDITIONAL LIGHTS FOR CAMERA SYSTEMS

For any kind of inspection tasks with a camera sensor the lighting is essential, as only high-contrast images enable reproducible evaluations. Here the lighting has a decisive influence. The choice depends on different factors such as the distance to the test object, its size, the component criteria to be tested or the expected environmental conditions.



MECHANICAL FEATURES

Ambient temperature (MAX)	50 °C
Degree of protection (IP)	IP67
Front screen material	Acrylic glass
Height	20 mm
Housing design	Cuboid
Housing material	Aluminum
Length	87 mm
Width	87 mm

ELECTRICAL FEATURES

Control unit included	-
Dimmable	-
Max. current consumption	190 mA
Nominal supply voltage	24 V ... 24 V
Number of pins	4
On/Off switch	-
Type of electrical connection	M8-connector
Voltage type	DC

OPTICAL FEATURES

Radiation angle	120 °
Lamp	LED
Light source	White light
With lamp	+
Number of LEDs	64
Light version	Surface area light
Actual camera illumination	+

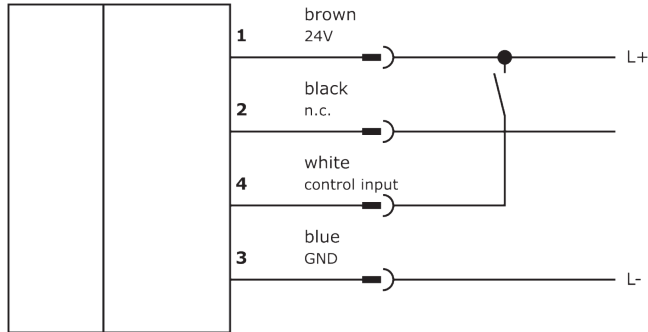
Other

Packaging dimensions	99.0mm x 60mm x 160mm
Shipping weight	0.25kg
Tariff code	94054099

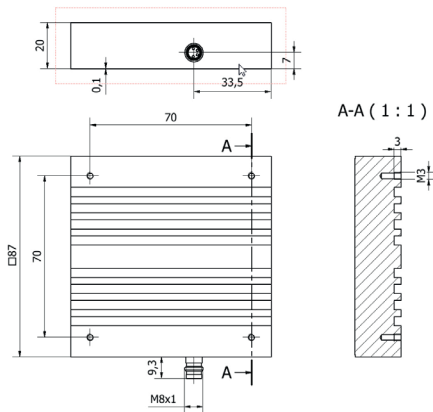
Classification

ipf product group	915
eClass 8.0	27310204
eClass 9.0	27310204
eClass 9.1	27310204
ETIM-5.0	EC000348
ETIM-6.0	
ETIM-7.0	EC000348

Connection



Dimensional drawing



Installation



Mounting / installation may only be carried out by a qualified electrician!

Disposal



Software

Please download the software or driver required for operating your new device on our homepage: www.ipf.de

Safety warnings

Before initial operation, please make sure to follow all safety instructions that may be provided in the product information. Never use these devices in applications where the safety of a person depends on their functionality. LED lighting systems can generate intensive UV radiation, which can damage your eyes in case of improper use. The manufacturer cannot be held responsible for damages that result from improper use or connection.