

## M12-Receptacle Connectors In Accordance With IEC 61076-2-101

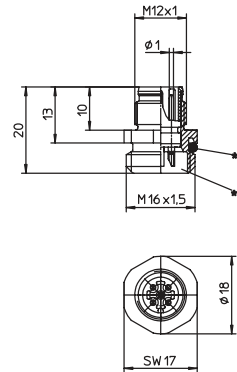
### RSFM | PRSFM



### Male, 3-, 4- and 5-Pole

Receptacle connector, combined FIXCON/M12 male connector for front mounting, solder connections, chassis side thread M16 x 1.5 (panel nut RSKFM 16).

### RSFM



- \*a O-ring enclosed separately
- \*b Attention!  
To ensure mechanical stability and impermeability, the wire connections must be epoxy potted after cable assembly.

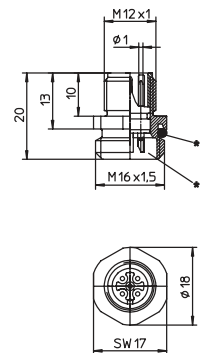


### Male, 3-, 4- and 5-Pole

Receptacle connector, M12 male connector for front mounting, housing of stainless steel, solder contacts not potted, chassis side thread M16 x 1.5 (panel nut RSKFM 16)

– especially designed for use in food processing equipment –.

### PRSFM



- \*a O-ring enclosed separately
- \*b Attention!  
To ensure mechanical stability and impermeability, the wire connections must be epoxy potted after cable assembly.

### Pin Assignments

#### Face Views / M12

#### 3 poles



#### 4 poles



#### 5 poles





Be Certain with Belden

**M12-Receptacle Connectors In Accordance With IEC 61076-2-101**  
RSFM | PRSFM

**Technical Data**

**Environmental**


Degree of protection IP 67 / NEMA 6P  
 Operating temperature range RSFM: -25°C (-13°F) / +80°C (+176°F)  
 PRSFM: -25°C (-13°F) / +70°C (+158°F)

**Mechanical**

Housing / Molded body RSFM: CuZn, nickel-plated  
 PRSFM: stainless steel  
 Insert RSFM: PA  
 PRSFM: PBT  
 Contact CuZn, pre-nickel and 0.8 microns gold-plated  
 O-ring RSFM: FKM  
 PRSFM: EPDM

**Electrical**

Contact resistance ≤ 5 mΩ  
 Nominal current at 40°C 4 A  
 Nominal voltage 3–4 poles 240 V  
 5 poles 60 V  
 Connection area must be epoxy potted.  
 Rated voltage 3–4 poles 250 V  
 5 poles 63 V  
 Test voltage 3–4 poles 2.0 kV eff. / 60 s  
 5–8 poles 1.5 kV eff. / 60 s  
 Insulation resistance > 10<sup>9</sup> Ω  
 Pollution degree 3

| Part Number | Pins | Characteristics   |
|-------------|------|---|
| RSFM 3      | 3    |   |
| RSFM 4      | 4    |   |
| PRSFM 4     |      |   |
| RSFM 5      | 5    |   |
| PRSFM 5     |      |   |

Receptacles