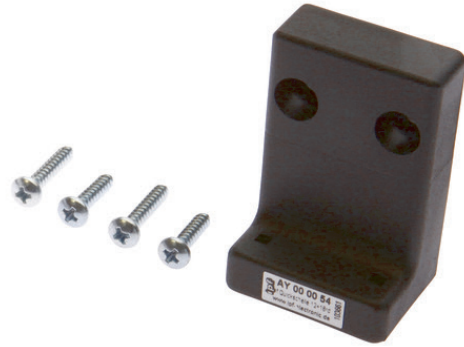


AY000054

ACCESSORIES • MOUNTING



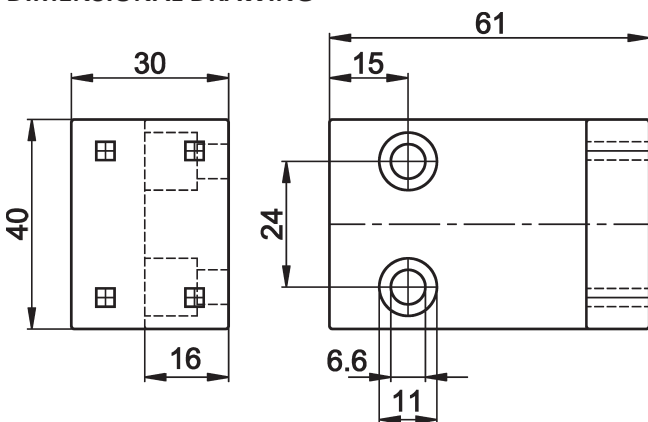
MECHANICAL DATA

Angle	90 °
Height	61 mm
Length	30 mm
Material	Plastic
Mounting type	Screw
Number of boreholes	2
Version	Mounting angle bracket
Weight	0.03 kg
Width	40 mm

OTHER DATA

Scope of delivery	Mounting material for holder
-------------------	------------------------------

DIMENSIONAL DRAWING



INSTALLATION

DISPOSAL



Mounting / Installation may only be carried out by a qualified electrician!



SAFETY WARNINGS

Before initial operation, please make sure to follow all safety instructions that may be provided in the product information!

Never use these devices in applications where the safety of a person depends on their functionality.