

IN98E219

INDUCTIVE SENSORS • ENLARGED SWITCHING DISTANCE

Inductive proximity switches are contact-free sensors. They detect all conductive metals, regardless of whether they move or not. The achievable sensing range of the devices depends on the object material and its dimensions. The vibration-resistant sensors can be approached laterally or frontally. Inductive proximity switches are used for presence detection (e.g. goods carriers), positioning (e.g. dampers), counting (e.g. nuts /bolts), speed detection (e.g. for cog wheels), on conveyor systems (e.g. hose feedings) or distance measurements (e.g. press-in checking) of metallic objects.

MECHANICAL DATA

| | |
|------------------------------------------|-----------|
| Ambient temperature (MAX) | 70 °C |
| Ambient temperature (MIN) | -25 °C |
| Degree of protection (IP) | IP67 |
| Housing design | Cuboid |
| Housing material | Aluminium |
| Mechanical mounting condition for sensor | Non-flush |
| Pressure-proof | No |
| Sensor height | 50 mm |
| Sensor length | 40 mm |
| Sensor width | 100 mm |

ELECTRICAL DATA

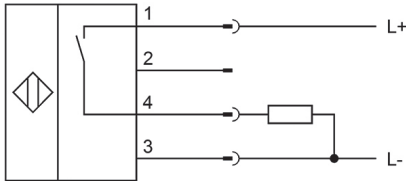
| | |
|------------------------------------------------|-----------------------|
| Cascadable | No |
| Hysteresis | 15 % |
| Max. output current | 400 mA |
| No-load current | 12 mA |
| Relative repeat accuracy | 10 % |
| Residual ripple | 10 % |
| Suitable for safety functions | No |
| Supply voltage (MAX) | 30 V |
| Supply voltage (MIN) | 10 V |
| Switching distance | 70 mm |
| Switching frequency | 300 Hz |
| Type of electrical connection | Connector M12 |
| Type of switching function | Normally open contact |
| Type of switching output | PNP |
| Voltage drop | 2.4 V |
| Voltage type | DC |
| With LED display | Yes |
| With monitoring function of downstream devices | No |

OTHER DATA

Areas inquiry

Yes

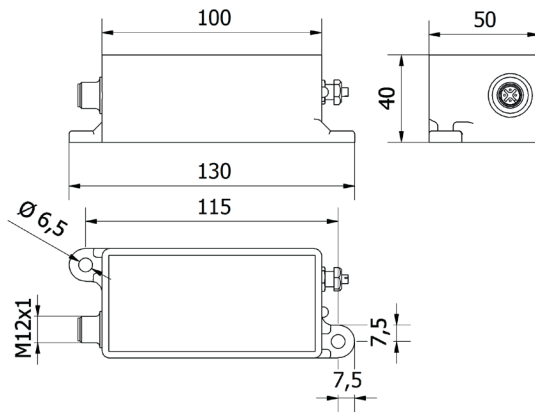
CONNECTION



Colors: 1 = BN (brown), 2 = WH (white), 3 = BU (blue), 4 = BK (black)

Functions: 1 = L+, 2 = n. c., 3 = L-, 4 = PNP NO

DIMENSIONAL DRAWING



INSTALLATION



Mounting / Installation may only be carried out by a qualified electrician!

DISPOSAL



SAFETY WARNINGS

Before initial operation, please make sure to follow all safety instructions that may be provided in the product information!

Never use these devices in applications where the safety of a person depends on their functionality.