

PK430170

LASER SENSORS • CONTRAST SCANNERS

Contrast scanners are capable to distinguish the the visual differences (e.g. reflectivity, brightness differences) between adjacent areas. In general, the devices project a light spot on an object's surface and analyze the reflected light. Fiber optic amplifier versions can be used in addition to the incident light mode also in the transmitted light mode. Contrast scanners are versatile. They can be used, among other things, for position control of printing or color marks, distinction of brightness variations or in the intensity control of luminous objects (like LEDs, displays etc.).



MECHANICAL DATA

Ambient temperature (MAX)	50 °C
Ambient temperature (MIN)	-10 °C
Degree of protection (IP)	IP67
Housing design	Cuboid
Housing material	Plastic
Material of optical surface	PMMA
Sensor height	14.8 mm
Sensor length	32.5 mm
Sensor width	43 mm
With fiber optics connection	No
With interchangeable lens	No

ELECTRICAL DATA

Analogue output 0 mA ... 20 mA	No
Analogue output 0 V ... 10 V	No
Analogue output -10 V ... +10 V	No
Analogue output 4 mA ... 20 mA	No
Large sensing range	Yes
Max. output current	100 mA
No-load current	50 mA
Number of pins	4
Operating voltage (MAX)	30 V
Operating voltage (MIN)	10 V
Rated control supply voltage U_s at DC (MAX)	30 V
Rated control supply voltage U_s at DC (MIN)	10 V
Reverse polarity protection	Yes
Sensing range (MAX)	300 mm
Sensing range (MIN)	20 mm
Setting procedure	Teach-In
Short-circuit-proof	Yes
Type of electrical connection	Connector M8

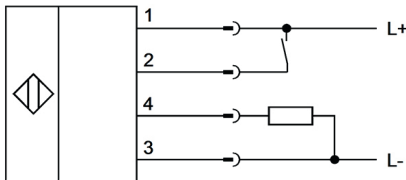
ELECTRICAL DATA

Type of switching function	Normally open contact (NO)
Type of switching output	PNP
Voltage drop	2.2 V
Voltage type	DC
With blanking function	No
With LED display	Yes
With time function	No

OPTICAL DATA

Laser protection class	Class 2
Light source	Laser diode, red light
Nominal sensing range	300 mm
Small light beam diameter	Yes

CONNECTION



Colors: 1 = BN (brown), 2 = WH (white), 3 = BU (blue), 4 = BK (black)

Functions: 1 = L+, 2 = teach-In, 3 = L-, 4 = PNP NO

DIMENSIONAL DRAWING

INSTALLATION



Mounting / Installation may only be carried out by a qualified electrician!

DISPOSAL



SAFETY WARNINGS

Before initial operation, please make sure to follow all safety instructions that may be provided in the product information!

Never use these devices in applications where the safety of a person depends on their functionality.