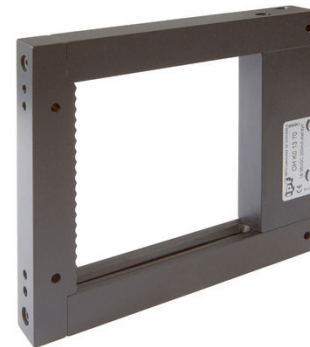


OHK01370

OPTICAL SENSORS • FRAME LIGHT BARRIERS

Frame and ring light barriers operate according to the principle of a through-beam sensor. Within the housing there is a variety of transmitter and receiver elements that form a light curtain and thus detect various objects. Application examples for these systems are ejection control of presses, presence monitoring or length measurements of wires or tubes.



MECHANICAL DATA

Active zone height	98 mm
Active zone width	100 mm
Ambient temperature	0 °C ... 60 °C
Constructive design	One-piece
Degree of protection (IP)	IP67
Frame opening, crosswise	100 mm
Frame opening, lengthwise	92 mm
Housing design	Cuboid
Housing design	Frame-shaped
Housing material	Aluminium
Material of optical surface	PMMA
Reflector included in the scope of delivery	No
Sensor height	140 mm
Sensor length	20 mm
Sensor width	153 mm
With compressed air connection	Yes
With mechanical impact protection	Yes

ELECTRICAL DATA

Analogue output 0 mA ... 20 mA	No
Analogue output 0 V ... 10 V	No
Analogue output -10 V ... +10 V	No
Analogue output 4 mA ... 20 mA	No
Max. output current	200 mA
No-load current	35 mA
Number of pins	3
Operating voltage (MAX)	35 V
Pulse stretching	150 ms
Pulse stretching	0.1 ms
Rated control supply voltage U_s at DC	18 V ... 35 V
Reaction time	0.1 ms

ELECTRICAL DATA

Reverse polarity protection	Yes
Setting procedure	Manual adjustment
Short-circuit-proof	Yes
Suitable for safety functions	No
Type of electrical connection	Connector M8
Type of switching function	Normally closed contact/normally open contact
Type of switching output	NPN
Voltage type	DC
With communication interface, analog	No
With communication interface, AS-Interface	No
With communication interface, CANOpen	No
With communication interface, DeviceNet	No
With communication interface, Ethernet	No
With communication interface, INTERBUS	No
With communication interface, PROFIBUS	No
With communication interface, RS-232	No
With communication interface, RS-422	No
With communication interface, RS-485	No
With communication interface, SSD	No
With communication interface, SSI	No
With monitoring function of downstream devices	No
With other analog output	No
With time function	Yes

OPTICAL DATA

Light source	Infrared light
Min. object size	3 mm
Resolution, dynamic	2.5
Resolution, static	3
Wavelength of the sensor	880 nm

OTHER DATA

Version	Static and dynamic
---------	--------------------

DIMENSIONAL DRAWING

INSTALLATION



Mounting / Installation may only be carried out by a qualified electrician!

DISPOSAL



SAFETY WARNINGS

Before initial operation, please make sure to follow all safety instructions that may be provided in the product information!